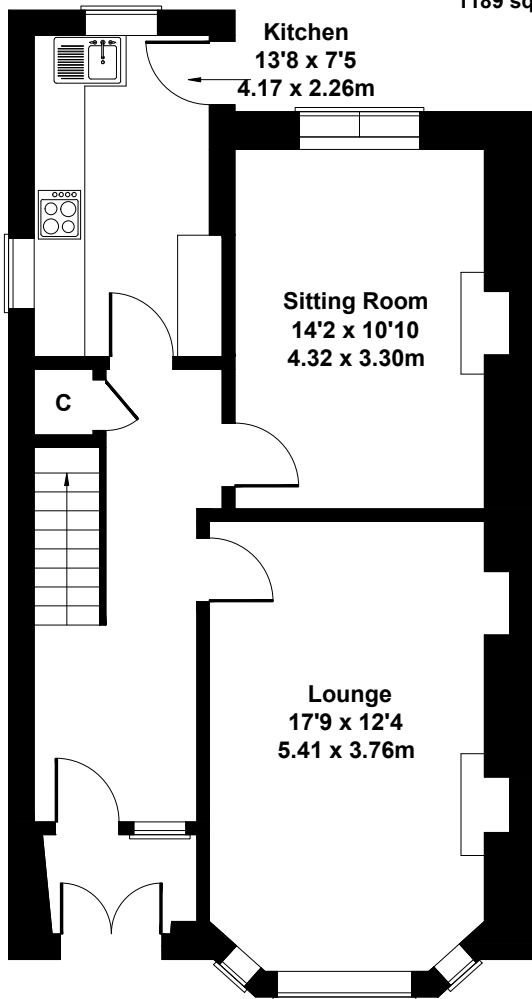


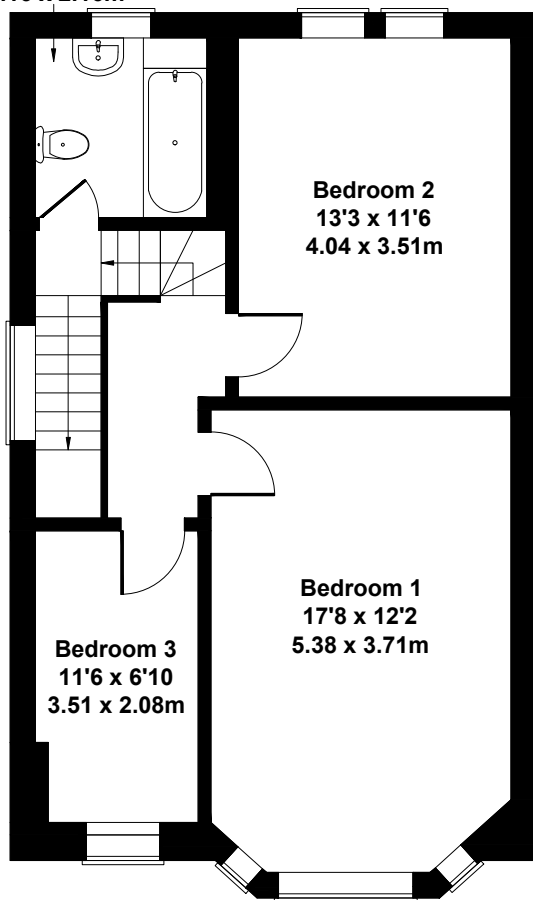
17 Ballogie Road, Kings Park, Glasgow G44 4SZ

Approximate Gross Internal Area

1189 sq ft - 110 sq m



GROUND FLOOR



FIRST FLOOR

SKETCH PLAN FOR ILLUSTRATIVE PURPOSES ONLY

All measurements walls, doors, windows, fittings and appliances, their sizes and locations, are approximate only. They cannot be regarded as being a representation by the seller, nor their agent.